



## Molded Outdoor Window Current Transformer

---

### Application

RML-935 are rugged molded dry type current transformers typically used in substations requiring high current monitoring capability or other applications both for indoor and outdoor locations. RML transformers are available in a wide range of ratios up to 12,000:5 and high current levels depending on accuracy and burden requirements.

### Fabrication

ITEC uses wound cores of high permeability and low loss electrical grade silicone steel that optimizes performance and physical size of the transformers.

High Grade insulation materials are used between the windings and the core and between winding layers. To achieve maximum mechanical and electrical performance, all windings or sections are evenly distributed around the periphery of the core.

The transformer is encapsulated utilizing polyurethane resin which provides an excellent mechanical protective body and long term dielectric performance in a wide range of temperatures and environments.

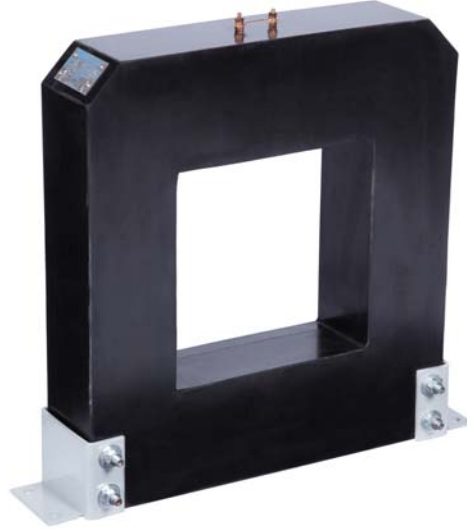
The secondary terminals are ¼"-20 studs with hardware located in a terminal box with two conduit openings (1" NPT) and a cover plate for ease of electrical connection.

### Accuracy

RML's are available with relay accuracy up to C800 and a metering accuracy of 0.3 B0.1...B1.8 is available depending upon ratio. Typical rating factor is 1.0. Please consult factory for your specific applications.

### Magnetic Circuits

DDC's are available with single, dual and multi-ratio for meter and or relay accuracy. Please consult factory for your specific application.



### Specification Requirements

When specifying an RML the following information is required at time of quotation.

1. Ratio
2. Winding type (single, dual or multi-ratio)
3. Primary and Secondary current
4. Accuracy and Burden requirements
5. Mounting details with installation requirements

### Mounting

All RML's are provided with mounting feet for ease of installation. If special mounting is required please consult factory at time of quotation

### Testing

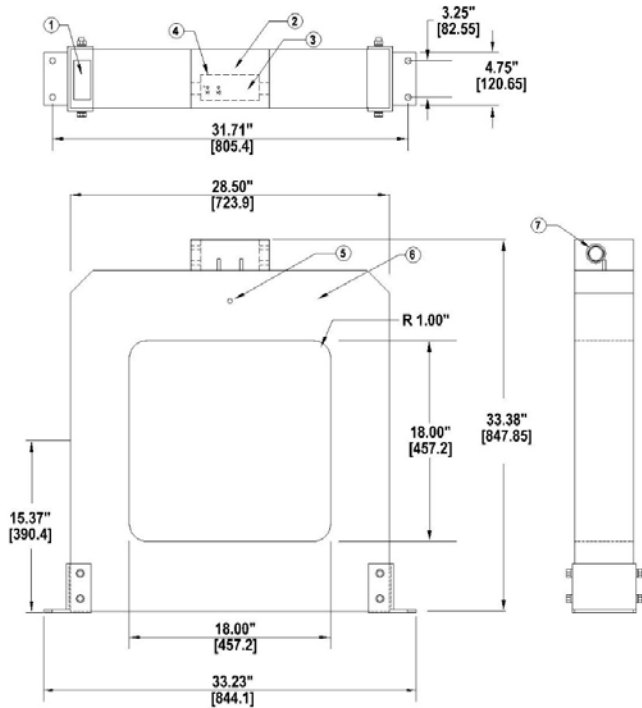
Every transformer is tested in accordance with IEEE Standard C57.13 (latest revision).

**Product Data**  
 RML-935  
 Current Transformer  
 8.7 kV Class  
 75 kV BIL



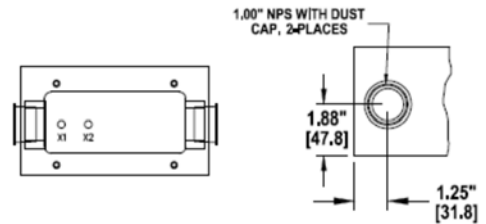
## Molded Outdoor Window Current Transformer

### Dimensions and Details



#### Notes:

- 1 Nameplate
- 2 1/4" - 20 secondary terminals
- 3 Low Voltage terminal markings
- 4 H1 Polarity Mark molded and painted white
- 5 X - Polarity Mark molded and painted white
- 6 Core & Coil Molded Assembly
- 7 Terminal Box (Optional)



### RML-935 8.7 kV, 75 kV BIL

Ratio	Meter Accuracy	Relay Accuracy	Rating Factor	Catalog Number with Mounting Feet	Catalog Number with Mounting Feet and Terminal Box
1000:5	0.3 @ B0.5	C100	1.0	L18S010C100H01	L18S010C100H03
1500:5	0.3 @ B0.5	C100	1.0	L18S015C100H01	L18S015C100H03
2000:5	0.3 @ B0.9	C200	1.0	L18S020C200H01	L18S020C200H03
2500:5	0.3 @ B0.9	C200	1.0	L18S025C200H01	L18S025C200H03
3000:5	0.3 @ B1.8	C400	1.0	L18S030C200H01	L18S030C200H03
4000:5	0.3 @ B1.8	C400	1.0	L18S040C400H01	L18S040C400H03
5000:5	0.3 @ B1.8	C400	1.0	L18S050C400H01	L18S050C400H03
6000:5	0.3 @ B1.8	C400	1.0	L18S06KC400H01	L18S06KC400H03
7000:5	0.3 @ B1.8	C400	1.0	L18S07KC400H01	L18S07KC400H03
8000:5	0.3 @ B1.8	C800	1.0	L18S08KC800H01	L18S08KC800H03
9000:5	0.3 @ B1.8	C800	1.0	L18S09KC800H01	L18S09KC800H03
10000:5	0.3 @ B1.8	C800	1.0	L18S10KC800H01	L18S10KC800H03
12000:5	0.3 @ B1.8	C800	1.0	L18S12KC800H01	L18S12KC800H03

This information is subject to change without notice.  
 ITEC is not responsible for typographical errors.  
 © Copyright 2016 Instrument Transformer Equipment Corporation

Other ratings and options may be available.  
 Please contact the factory with your requirements.

### Instrument Transformer Equipment Corporation

PO Box 129  
 Monroe, NC 28110-0129  
[www.itec-ctvt.com](http://www.itec-ctvt.com)

Tel: (704)-282-4331  
 Fax: (704) 283-3017  
 Email: [sales@itec-ctvt.com](mailto:sales@itec-ctvt.com)