



Auxiliary Current Transformer

Application

DCR-951 and DCR-952 indoor auxiliary current transformers are specifically designed to provide the ability to change effective ratios of existing current transformers by being connected across the output of a main current transformer. The need for this product's performance level will be demonstrated when a user completes appropriate relay circuit loading calculations. Conservative designs ensure desired performance with a safety margin at the IEEE 20X normal current operating requirement. These units are intended to be used as step-up or step down only units as indicated on the unit nameplate. Another benefit of this product is to provide isolation between primary and secondary circuits



Fabrication

The core is made of grain oriented silicon steel laminations. Primary and secondary windings are wound type and assembled with the core prior to impregnation. Impregnation improves the general dielectric performance. On units at 30 amperes and below, windings are routed to a top mounted terminal block. Units having higher ampere ratings are fitted with terminal lugs or bars to make the necessary electrical connection. Terminal markings are clearly identified.

Accuracy

The DCR-951 is available up to 100 primary amperes and relay accuracy of T200, with additional performance range provided by the DCR-952 series of up to 400 primary amperes and T400. DCR's rating factors are normally 1.5 for ratio below 20:5 and 1.0 for ratios at and above 20.5. The transformer is accurate through its rating factor.

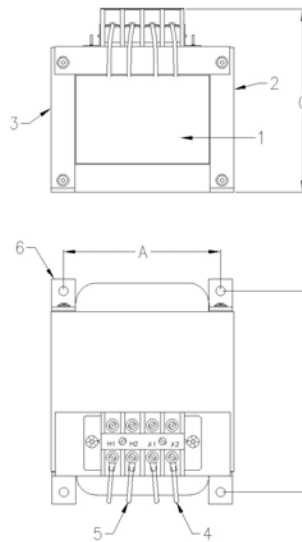
Mounting

DCR's can be mounted in an upright, underhung or cantilevered position using the factory provided mounting feet.

Testing

Every transformer is tested in accordance with IEEE Standard C57.13 (latest revision).

Dimensions and Details



Notes:

- | | |
|---------------------|---------------------|
| 1. Winding Assembly | 4. Secondary Leads |
| 2. Core | 5. Primary Leads |
| 3. Nameplate | 6. Mounting Bracket |

Dimensions	DCR-951	DCR-952
A	5.00"	6.50"
B	See Tables	See Tables
C	5.70"	7.70"

Product Data
 DCR-951 & 952
 Auxiliary Current
 Transformer
 600 Volt Class
 10 kV BIL



Auxiliary Current Transformer

DCR-951			T100/200			
Pri Amps	Sec Amps	Accy	RF	"B"	WT (lbs)	Catalog Number
1	1	T100	1.5	5.38"	25	AA0020T10R15H01
1	6	T100	1.5	4.00	42	AA5011T10R15H01
1	10	T100	1.5	3.00"	36	AA5007T10R15H01
1	20	T100	1.0	4.00"	41	AA5008T10R15H01
2.5	5	T100	1.5	4.00"	42	AA5022T10R15H01
3	1	T200	1.0	6.00"	58	AA5030T20R15H01
4.3	5	T200	1.5	5.50"	27.5	AA5029T20R15H01
5	.03	T200	1.5	3.00"	37	AA5050T20R15H01
5	0.1	T100	1.5	3.88"	18	AA0021T10R15H01
5	0.5	T100	1.5	3.88"	18	AA0030T10R15H01
5	1	T100	1.5	5.38"	23	AA0081T10R15H01
5	5	T100	1.5	5.38"	32	AA0291T10R15H01
5	2.5	T200	1.5	4.50"	27	AA5010T20R15H01
5	3	T200	1.5	6.38"	32	AA5027T20R15H01
5	3.33	T100	1.5	4.00"	20	AA5046T10R15H01
5	7.5	T200	1.5	6.00"	42	AA5051T20R15H01
5	10	T100	1.5	6.00"	52	AA5032T10R15H01
6	1	T100	1.5	4.00"	37	AA5012T10R15H01
6	5	T100	1.5	4.00"	20	AA5042T10R15H01
6.25	5	T200	1.5	5.00"	47	AA5047T20R15H01
6.67	5	T200	1.5	5.00"	25	AA5028T20R15H01
7.5	5	T100	1.5	5.38"	25	AA0351T10R15H01
7.8	5	T100	1.5	3.88"	42	AA5026T10R15H01
8.33	5	T200	1.5	4.00"	44	AA5021T20R15H01
9.375	5	T200	1.5	5.00"	25	AA5033T20R15H01
10	5	T100	1.5	5.38"	26	AA0101T10R15H01
10	5	T200	1.5	6.00"	30	AA5039T20R15H01
10.66	16	T100	1.5	6.00"	30	AA5014T10R15H01
15	5	T100	1.5	4.00"	42	AA5005T10R15H01
15	5	T200	1.5	6.00"	30	AA5038T20R15H01
20	5	T100	1.0	4.00"	41	AA5034T10R15H01
25	1	T200	1.5	4.50"	22	AA5043T20R15H01
33.3	5	T100	1.0	4.00"	44.5	AA5002T10R10H01
40	5	T200	1.5	6.38"	32	AA5004T20R15H01
50	5	T100	1.0	5.38"	25	AA5001T10R10H01

DCR-952			T200/400			
Pri Amps	Sec Amps	Accy	RF	"B"	WT (lbs)	Catalog Number
1	1.11	T400	1.0	6.0	80.0	AC6071T40R10H01
1.5	5	T400	1.5	6.00"	66	AC6027T40R15H01
2	5	T400	1.5	6.0"	66	AC6030T40R15H01
3.33	1	T200	1.0	5.00"	77	AC6010T20R10H01
4	5	T200	1.0	4.00"	55	AC6045T20R10H01
5	1	T400	1.5	3.00"	33	AC6053T40R15H01
5	4	T200	1.5	5.9"	65	AC6101T20R15H01
5	10	T200	1.0	3.00"	33	AC6037T20R10H01
5	10	T200	1.5	5.00"	68	AC6066T20R15H01
5	10	T400	1.5	10.0"	120	AC6067T40R15H01
5	16.67	T200	1.5	10.00	125	AC6064T20R15H01
7	7.5	T200	1.5	5.0"	60	AC6113T20R15H01
7.5	5	T400	1.5	6.00"	66	AC6029T40R15H01
8.33	5	T200	1.0	3.00"	33	AC6034T20R10H01
10	2.5	T400	1.5	3.50"	38.5	AC6042T40R15H01
10	5	T200	1.5	5.00"	77	AC6002T20R15H01
10	5	T400	1.5	5.00"	68	AC6004T40R15H01
10	7.5	T200	1.5	6.00"	70	AC6055T20R15H01
10	10	T200	1.5	3.00"	33	AC6033T20R15H01
12	5	T200	1.0	3.00"	33	AC6023T20R10H01
12	5	T400	1.5	6.00"	66	AC6024T40R15H01
15	5	T200	1.5	6.00"	45	AC6061T20R15H01
15	5	T400	1.5	4.50	49.5	AC6035T40R15H01
16.67	5	T200	1.5	4.80"	53	AC6114T20R15H01
20	5	T200	1.0	3.50"	59	AC6054T20R10H01
20	3	T400	1.5	5.00"	55	AC6039T40R15H01
25	5	T400	1.5	6.00"	66	AC6028T40R15H01
31.25	5	T200	1.0	3.64"	40	AC6108T20R10H01
40	5	T200	1.0	4.00"	68	AC6011T20R10H01
50	5	T200	1.0	4.63"	35	AC0382T20R10H01
75	5	T200	1.0	6.00	40	AC6003T20R10H01
100	5	T200	1.0	6.13"	46	AC6009T20R10H01
200	5	T200	1.0	4.63"	34	AC6010T20R10H01
400	5	T400	1.0	4.00"	66	AC6007T40R10H01

Other ratings and options are available
 Please contact the factory with your requirements

This information is subject to change without notice.
 ITEC is not responsible for typographical errors.
 © Copyright 2016 Instrument Transformer Equipment Corporation

Instrument Transformer Equipment Corporation

PO Box 129
 Monroe, NC 28110-0129
www.itec-ctvt.com

Tel: (704)-282-4331
 Fax: (704) 283-3017
 Email: sales@itec-ctvt.com