

## Molded Substation Current Transformers

**400:5 amperes through 5,000:5 amperes**

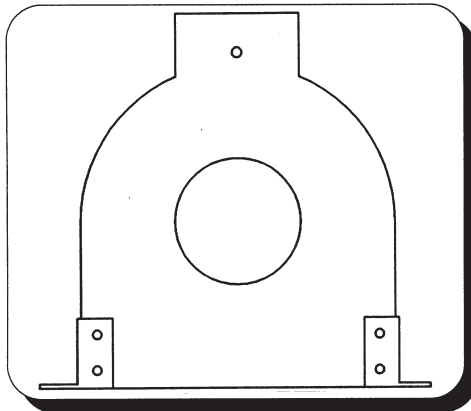
### Application

**APC 892 / DDC 970** are rugged molded, outdoor, dry type, current transformers suitable for fitting over bushings or conductors which provide the high voltage insulation. **APC / DDC** is a unique way to add CT capability to the previously installed or in-service main apparatus when system upgrading is desired. This retrofit technique of adding monitoring to apparatus offers a large savings over free standing equipment or adding internal CTs. **APC / DDC** transformers may be supplied in a wide range of ratios depending on burden and accuracy requirements. They may be supplied as single, dual and multi-ratio and are capable of accuracy levels to meet relay performance at some ratios of up to C800 IEEE classification.

### Fabrication

Wound cores of high permeability and low losses are used to optimize performance and physical size of the transformers.

High grade insulation is used to insulate between the winding and the core and between the winding layers. To achieve performance, all windings or sections of windings are located around the periphery of the core. The transformer is encapsulated which provides an excellent external mechanical protective body and long term dielectric performance. The unit has 1/4-20 secondary stud connections in a terminal box with two conduit openings (1" NPT) and a cover-plate for ease of installation.



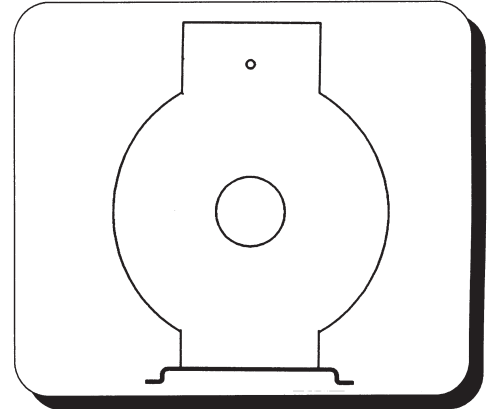
### Accuracy

**APC / DDC** is available as a relay CT with a single, dual or multi-ratio winding type having full winding relay accuracy of up to C800. Normal rating factors are 1.5.

### Testing

Every transformer is tested in accordance with IEEE STD C57.13 (Latest revision).

Both meter and relay current transformers are checked for ratio accuracy at various stages of manufacture. Test comparisons are made with standards traceable to NIST to validate ratio accuracy performance for all CTs. For relay ("C" classification rating) CT performance is verified by excitation measurements.



### Specification Requirements

When specifying **APC / DDC** s the following information is useful to the design engineer in satisfying your needs:

1. Min. ID, Max. OD, Max. Height or depth.
2. Ratio / type (single, dual, or multi-ratio).
3. Accuracy and burden rating i.e.  
Relay C100 to C800 or  
Meter: 0.3 @ B1.8.
4. Mounting details.

See reverse for additional information.

**600-5**

**Molded Substation Current Transformers**  
**400:5 amperes through 5,000:5 amperes**

Ratios

Available

400 : 5

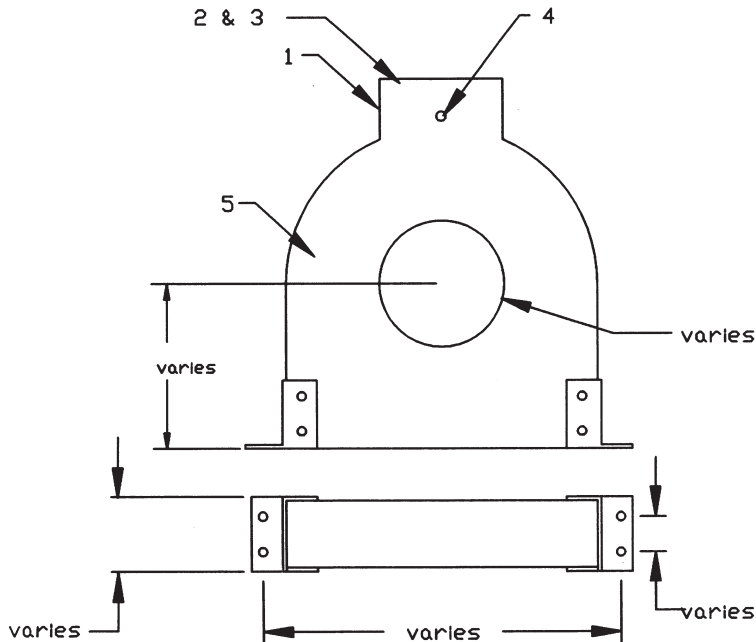
600 : 5

1,200 : 5

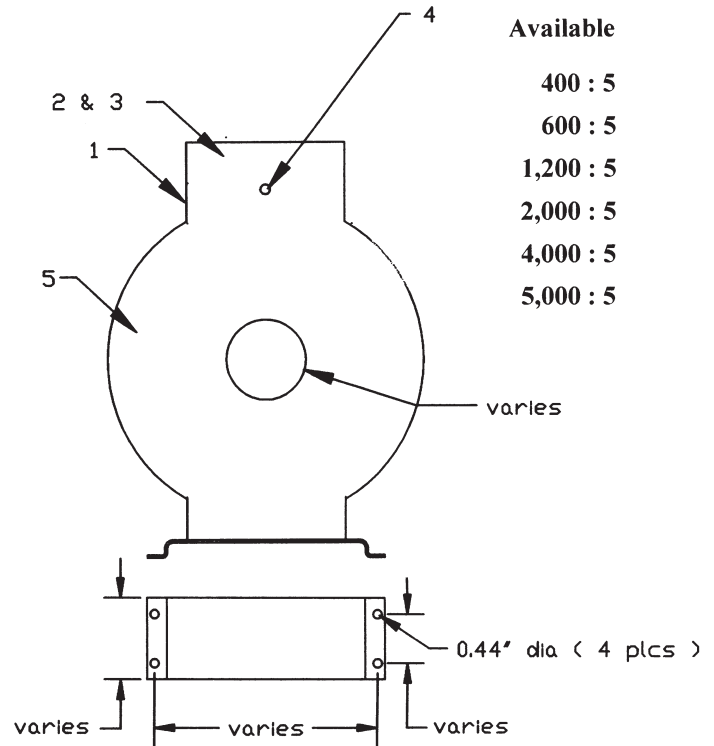
2,000 : 5

4,000 : 5

5,000 : 5



**APC 892**



**DDC 970**

**Note** - Transformers are supplied with secondary shorted. Short should be removed only at time of installation by personnel skilled in the art of installing sophisticated electrical equipment. High voltage will occur at the secondary terminals if left open circuited when primary current is flowing.

**Clearances** - This retrofit product is best selected by careful inspection of the apparatus and its related bushing drawings to insure mechanical and electrical clearances in keeping with the users normal operating practice.

This information is subject to change without notice. Not responsible for typographical errors.

**Description**

- |                         |                      |
|-------------------------|----------------------|
| 1. Nameplate.           | 4. Polarity mark.    |
| 2. Secondary terminals. | 5. Winding assembly. |
| 3. Terminal box.        |                      |

**600-6** Additional ratios are available. Contact factory for latest information.

**Instrument Transformer Equipment Corporation, PO Box 23088, Charlotte NC 28227-0272**

**Tel: (704) 282-4331**

**www.itec-ctvt.com**

**Fax: (704) 283-3017**

**E-mail sales@itec-ctvt.com**