

RML 934
8.7 KV CLASS
75 KV BIL



RML 934
8.7 KV CLASS
75 KV BIL

Molded Outdoor Window Current Transformer

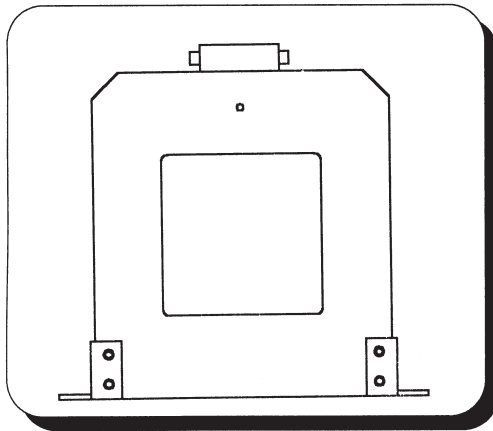
1,000:5 amperes through 12,000:5 amperes

Application

RML-934 is a rugged molded dry type current transformer typically used in substations requiring high current monitoring capability or other applications for both indoor and outdoor locations. **RML** transformers may be supplied in a wide range of ratios up to 12,000:5 and may be available at higher current levels depending on burden and accuracy requirements. They may be supplied as single, dual or multi-ratio devices and are capable of accuracy levels to meet relay performance through C800 IEEE classification and for metering up to 0.3@B0.1 through 1.8.

Fabrication

Accuracy performance is a function of the magnetic performance of the steel core. Wound cores of high permeability and low losses are used to optimize performance and physical size of the transformers. High grade insulation is used to insure suitable protection from the winding to the core, and between winding layers. To achieve maximum mechanical and electrical performance, all windings or sections of windings are distributed evenly around the periphery of the core. The exterior of the transformer is molded which provides an excellent mechanical protective coat and dielectric performance. The unit also comes with mounting feet for ease of installation.



Accuracy

Every transformer is checked for accuracy at various stages of manufacture. Comparisons are made with standards traceable to NIST to validate accuracy performance for meter CT's while relay ("C" classification rating) performance is verified by excitation measurements.

Testing

Every transformer is tested in accordance with IEEE STD C57.13 (Latest revision). Test comparisons are made with standards traceable to NIST to validate ratio accuracy performance for meter CTs or relay CTs.

Specification Requirements

When specifying **RML's** the following information is useful to the design engineer in satisfying your needs:

1. Ratio.
2. Winding type (single, dual, multi-ratio).
2. Primary and Secondary current.
3. Accuracy and burden rating i.e.
 Relay: C100 (multi-ratio)
 Meter: 0.3@B0.1..B1.8 (single or dual)
4. Mounting details with installation requirements.

Characteristic Curves

Performance characteristics can be provided as required. Typical data for several standard IEEE ratios and accuracy classifications are provided as guidelines for information format only in appendix A and on the reverse side of this data sheet.

Special Application

RML is ideal for applications metering high current primary services and electric industrial furnaces.

8.7-1

Instrument Transformer Equipment Corporation, PO Box 23088, Charlotte NC 28227-0272

Tel: (704) 282-4331

www.itec-ctvt.com

Fax: (704) 283-3017

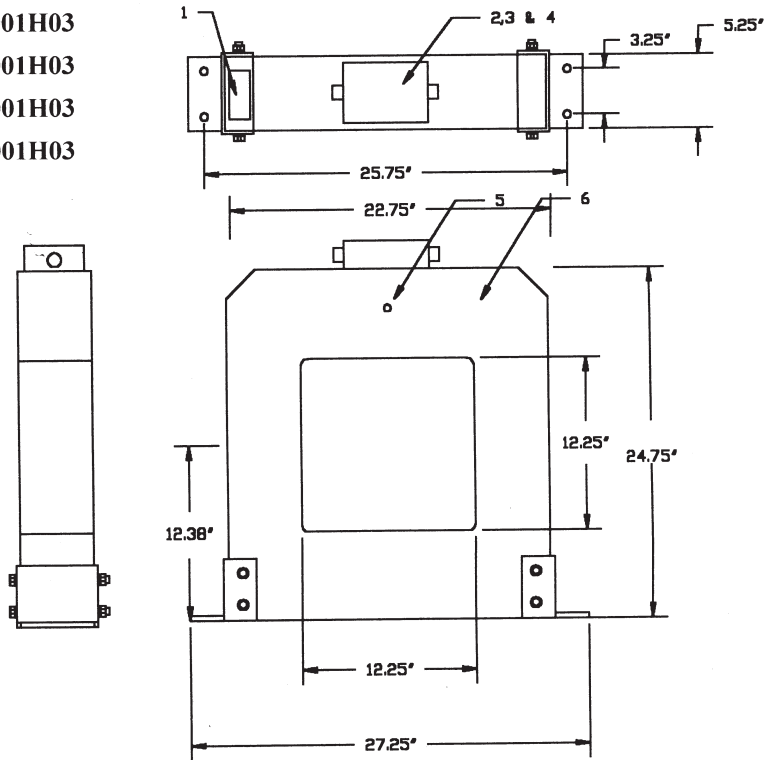
E-mail sales@itec-ctvt.com

Molded Outdoor Window Current Transformers

1000:5 amperes through 12000:5 amperes

See Appendix A for Typical Curves

Primary Rating	Meter-accuracy	Relay-Accuracy	Catalog Number
1,000	0.3 @B0.1..B0.5	C100	L12S01KC1001H03
1,500	0.3 @B0.1..B0.5	C100	L12S15CC1001H03
2,000	0.3 @B0.1..B0.9	C200	L12S02KC2001H03
2,500	0.3 @B0.1..B0.9	C200	L12S25CC2001H03
3,000	0.3 @B0.1..B1.8	C200	L12S03KC2001H03
4,000	0.3 @B0.1..B1.8	C400	L12S04KC4001H03
5,000	0.3 @B0.1..B1.8	C400	L12S05KC4001H03
6,000	0.3 @B0.1..B1.8	C400	L12S06KC4001H03
7,000	0.3 @B0.1..B1.8	C400	L12S07KC4001H03
8,000	0.3 @B0.1..B1.8	C800	L12S08KC8001H03
9,000	0.3 @B0.1..B1.8	C800	L12S09KC8001H03
10,000	0.3 @B0.1..B1.8	C800	L12S10KC8001H03
12,000	0.3 @B0.1..B1.8	C800	L12S12KC8001H03



This information is subject to change without notice. Not responsible for typographical errors.

Description

- 1. Nameplate.
- 2. Terminal box.
- 3. Secondary terminals.
- 4. Conduit hubs.
- 5. Polarity mark.
- 6. Winding assembly.

8.7-2 Contact factory for additional information on these high voltage molded products.